



V110 Parts Replacement Instructions

This document is intended for service personnel. It provides information not found in the user manual. For information such as replacing the battery pack, hard disk drive kit, and carrying strap, see the user manual of the product.

Right battery door (P/N 340129000002)	2
Left battery door (P/N 340129000003)	2
SSD door (P/N 340129000004)	3
Expansion card door (P/N 340129000005)	3
HDMI door (P/N 340129000006)	4
RS232 door (P/N 340129000007)	4
DC door (P/N 340129000008)	5
Audio door (P/N 340129000009)	5
Keyboard (P/N 531129000030)	6
LCD latch (P/N 340129000011)	8
Hard handle (P/N 340129000030)	9
Corner Bumpers (P/Ns 344129000022, 344129000023, 344129000024, 344129000025)	10
SSD in the SSD kit (P/Ns 523481763010, 523481763011, 523481763012)	11

Right battery door (P/N 340129000002)

To remove:

1.	Remove the four screws that secure the door to V110. 
2.	Detach the door from V110.

To install:

Reverse the removal procedure to install the new part.

Left battery door (P/N 340129000003)

To remove:

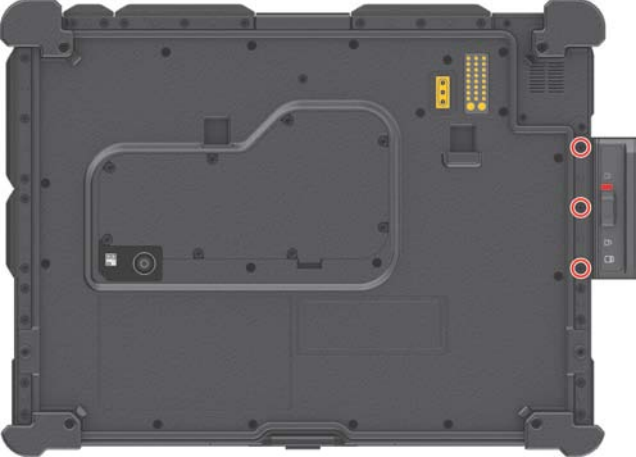
1.	Remove the four screws that secure the door to V110. 
2.	Detach the door from V110.

To install:

Reverse the removal procedure to install the new part.

SSD door (P/N 340129000004)

To remove:

1.	Remove the three screws that secure the door to V110. 
2.	Detach the door from V110.

To install:

Reverse the removal procedure to install the new part.

Expansion card door (P/N 340129000005)

To remove:

1.	Remove the three screws that secure the door to V110. 
2.	Detach the door from V110.

To install:

Reverse the removal procedure to install the new part.

HDMI door (P/N 340129000006)

To remove:

1. Remove the three screws that secure the door to V110.



2. Detach the door from V110.

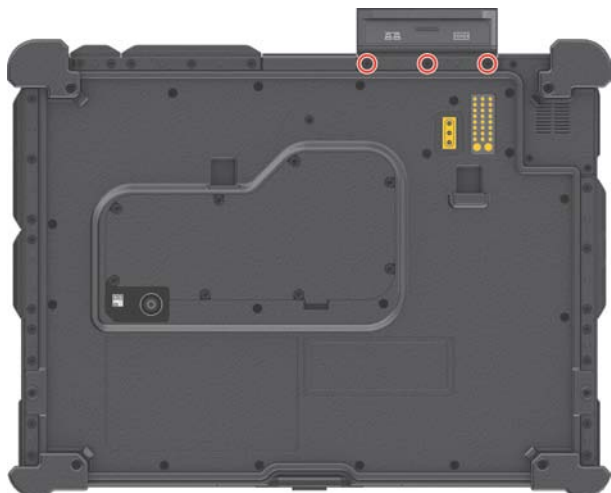
To install:

Reverse the removal procedure to install the new part.

RS232 door (P/N 340129000007)

To remove:

1. Remove the three screws that secure the door to V110.




2. Detach the door from V110.

To install:

Reverse the removal procedure to install the new part.

DC door (P/N 340129000008)

To remove:

1.	Remove the two screws that secure the door to V110. 
2.	Detach the door from V110.

To install:

Reverse the removal procedure to install the new part.

Audio door (P/N 340129000009)

To remove:

1.	Remove the two screws that secure the door to V110. 
2.	Detach the door from V110.

To install:

Reverse the removal procedure to install the new part.

Keyboard (P/N 53112900030)

To remove:

1. Remove the battery packs from V110.
2. Open the display and turn it counter-clockwise by 90 degrees.



3. Lay the display down on one side. Remove the keyboard cover by unfastening three screws.
Flip the display to the other side. Remove the other keyboard cover by unfastening three screws.



Screw P/N: 370102010319

4. Remove the screws near the hinge: one screw at each side. Then detach the hinge cover from V110.



Screw P/N: 370102010319

5. Remove the two screws that secure the keyboard.

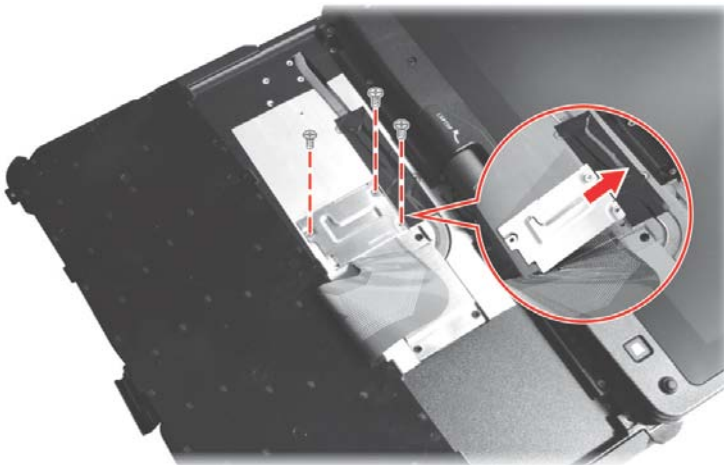


Screw P/N: 371102040020

6. Slightly lift the keyboard from one side and turn it over. Be careful not to pull the FPC under the keyboard.

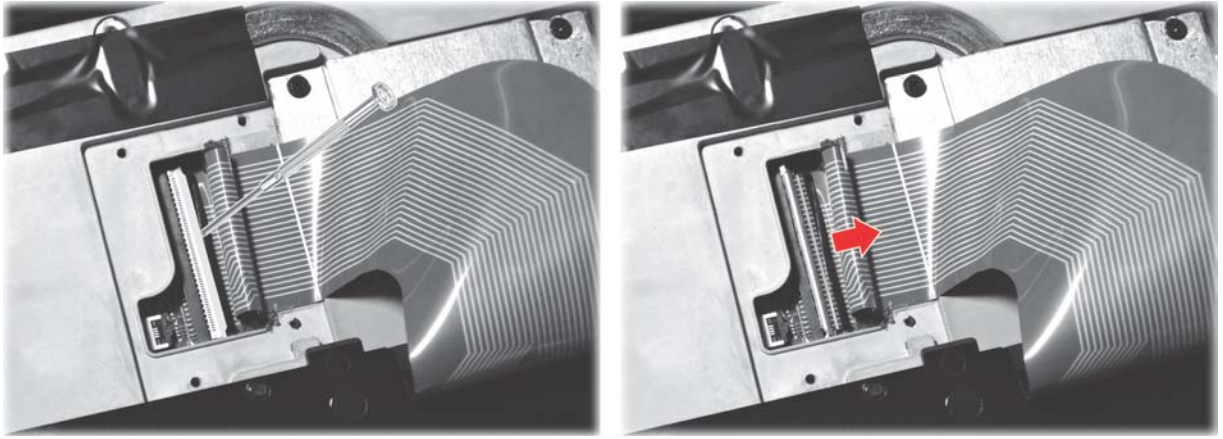


7. Remove the keyboard FPC cover by unfastening three screws.



Screw P/N: 370102010319

8. Using a tool such as a small flat head screwdriver, gently pry up the actuator of the connector to release the connection. Then pull the keyboard FPC out of the connector.



To install:

Reverse the removal procedure to install the new part.

LCD latch (P/N 34012900011)

To remove:

1. Remove the two screws that secure the latch to V110.



Screw P/N: 370102610409

2. Detach the latch from V110.

To install:

Reverse the removal procedure to install the new part.

Hard handle (P/N 340129000030)

To remove:

1. At each side, remove the loop bracket by unfastening one screw.



Screw P/N: 370102610409

2. At each side, remove two longer screws from the front and one middle-length screw from the round corner.



Screw P/N: 370102610150 (x4)

Screw P/N: 371102600017 (x2)

3. Detach the hard handle from V110.

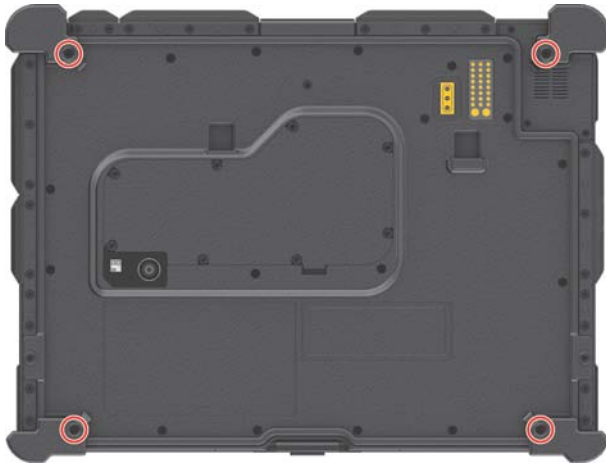
To install:

Reverse the removal procedure to install the new part.

Corner bumpers (P/Ns 344129000022, 344129000023, 344129000024, 344129000025)

To remove:

1. Remove four screws at the bottom of V110 (one screw from each bumper).



2. Remove a total of 14 screws from the four bumpers. When the front left and front right corner screws (P/N 342830700020) are removed, the loop bracket will come loose from the bumper.



Screw P/N: 371102600001 (x 12)
Screw P/N: 342830700020 (x 2)

3. Detach the bumpers from V110.

To install:

Reverse the removal procedure to install the new part.

SSD in the SSD kit (P/Ns 523481763010, 523481763011, 523481763012)

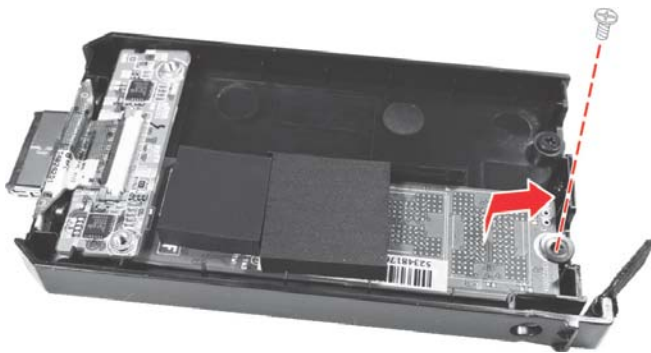
To remove:

1. Remove a total of 5 screws from the SSD kit. Lift the metal cover from the kit.



Screw P/N: 370102010319 (x3)
Screw P/N: 370102010267 (x2)

2. Remove one screw, slightly lift up the SSD, and detach it from the kit.



Screw P/N: 371102010042

To install:

Reverse the removal procedure to install the new part.